

# Prospective observational study of point-of-care creatinine in trauma

Anthony J Carden,<sup>1</sup> Edgardo S Salcedo,<sup>1</sup> Nam K Tran,<sup>2</sup> Eric Gross,<sup>3</sup> Jennifer Mattice,<sup>3</sup> Jan Shepard,<sup>3</sup> Joseph M Galante<sup>1</sup>

<sup>1</sup>Department of Surgery, Division of Trauma and Acute Care Surgery, UC Davis Medical Center, Sacramento, California, USA

<sup>2</sup>Department of Pathology and Laboratory Medicine, UC Davis Medical Center, Sacramento, California, USA

<sup>3</sup>Department of Emergency Medicine, UC Davis Medical Center, Sacramento, California, USA

**Correspondence to**  
Dr Anthony J Carden;  
acarden@ucdavis.edu

This project was presented at ASC in Jacksonville, FL, on 2 February 2016.e000014.

Received 18 May 2016  
Revised 17 June 2016  
Accepted 21 June 2016

## ABSTRACT

**Background** Patients with trauma are at risk for renal dysfunction from hypovolemia or urological injury. In austere environments, creatinine values are not available to guide resuscitation. A new portable device, the Stat Sensor Point-of-care (POC) Whole Blood Creatinine Analyzer, provides accurate results in <30 s and requires minimal training. This device has not been evaluated in trauma despite the theoretical benefit it provides. The purpose of this study is to determine the clinical impact of the POC device in trauma.

**Methods** 40 patients with trauma were enrolled in a prospective observational study. One drop of blood was used for creatinine determination on the Statsensor POC device. POC creatinine results were compared to the laboratory. Turnaround time (TAT) for POC and laboratory methods was calculated as well as time elapsed to CT scan if applicable.

**Results** Patients (n=40) were enrolled between December 2014 and March 2015. POC creatinine values were similar to laboratory methods with a mean bias of  $0.075 \pm 0.27$  (p=0.08). Mean analytical TATs for the POC measurements were significantly faster than the laboratory method ( $11.6 \pm 10.0$  min vs  $78.1 \pm 27.9$  min, n=40, p<0.0001). Mean elapsed time before arrival at the CT scanner was  $52.9 \pm 34.2$  min.

**Conclusions** The POC device reported similar creatinine values to the laboratory and provided significantly faster results. POC creatinine testing is a promising development for trauma practice in austere environments and workup of a subset of stable patients with trauma. Further study is warranted to determine clinical impact, both in hospital-based trauma and austere environments.

## INTRODUCTION

Trauma patients are at risk for renal dysfunction from hypovolemia or urological injury. In austere environments, however, creatinine values are typically not available to guide resuscitation. A new portable device, the Stat Sensor Point-of-care (POC) Whole Blood Creatinine Analyzer (Nova Biomedical, Waltham, Massachusetts, USA), has been evaluated in other fields, including monitoring resuscitation in burn surgery,<sup>1, 2</sup> trending post-operative renal function in patients with renal transplant,<sup>3</sup> and in radiology departments to screen for renal failure prior to contrast administration.<sup>4</sup> It provides accurate results<sup>4-6</sup> in <30 s and requires minimal training. This device has not been evaluated in the trauma setting despite the theoretical benefit it provides. This device can potentially be used for rapid creatinine results in austere

environments<sup>7</sup> that historically do not have access to renal function tests.

The purpose of this study is to determine the potential clinical impact of this POC creatinine analyzer in the trauma setting. Our hypothesis is that the POC creatinine device can be integrated into the existing trauma system and will result creatinine values similar to the hospital laboratory, but significantly faster.

## METHODS

The present study was approved by the Institutional Review Board. We performed a prospective observational study of adult patients who came into the emergency room at a single Level I trauma center coded as major traumas, based on prehospital triage criteria. Prisoners, pediatric patients (<18 years old), and pregnant women were excluded. Patients were also excluded if their planned workup did not include creatinine testing. Enrollment occurred between 6:00 and 18:00, on weekdays between January and April of 2015, in a population of convenience. The primary outcome was POC creatinine level, compared to the laboratory value. The secondary outcomes were turnaround time (TAT) of the POC and laboratory creatinine levels and the time elapsed for the patient to arrive at the CT scanner, when applicable.

For each enrolled patient, a single drop of blood was taken from the same initial sample as the patient's other laboratory tests. The blood sample was tested using the POC whole blood creatinine meter. The creatinine value, the time it was obtained, and the patient's arrival time were recorded. The creatinine and time information was not provided to the managing trauma team and did not impact clinical decisions. Informed consent was obtained within 24 hours of arrival, prior to further data abstraction from the medical record.

The electronic medical record was used to obtain the laboratory creatinine value, the time it became available, and the time the patient arrived at the CT scanner, when applicable. POC creatinine results were compared directly to the laboratory value. TATs for POC and laboratory methods were calculated as well as time elapsed to CT scan when applicable. Creatinine values and TATs were calculated using a standard t-test.

## RESULTS

Forty patients were enrolled between December 2014 and March 2015. The mean age was 71.2 years. Thirty per cent were women. Ninety-five per cent had sustained blunt trauma and 20% required operative management. The

**To cite:** Carden AJ, Salcedo ES, Tran NK, et al. *Trauma Surg Acute Care Open* Published Online First: [please include Day Month Year] doi:10.1136/tsaco-2016-000014

**Table 1** Demographics

Mean age	71.2 years
Gender	30% women
Type of trauma	95% blunt, 5% penetrating
Median hospital length of stay	2 days
Patients who underwent operative management	20%
Median injury severity score	4

median hospital length of stay was 2 days. The median injury severity score was 4 (range 0–36). Please see [table 1](#) for demographics.

Mean POC creatinine values were  $1.01 \pm 0.33$ , compared to  $1.08 \pm 0.34$  for laboratory creatinine. The difference between these values was not statistically significant, with a mean bias or difference between POC and laboratory values, of  $0.075 \pm 0.27$  ( $p=0.08$ ). [Figure 1](#) is a Bland-Altman Plot, which shows the laboratory creatinine value on the x axis and the bias on the y axis. [Figure 2](#) plots laboratory creatinine on the x-axis and POC creatinine on the y-axis.

Mean analytical TATs for the POC measurements were significantly faster than the laboratory method ( $11.6 \pm 10.0$  min vs  $78.1 \pm 27.9$  min,  $p < 0.0001$ ). The mean elapsed time before arrival at the CT scanner for the 30 patients who underwent CT imaging was  $52.9 \pm 34.2$  min. At the time of CT scanning, 29 of 30 had POC creatinine values available, while only 5 of 30 had

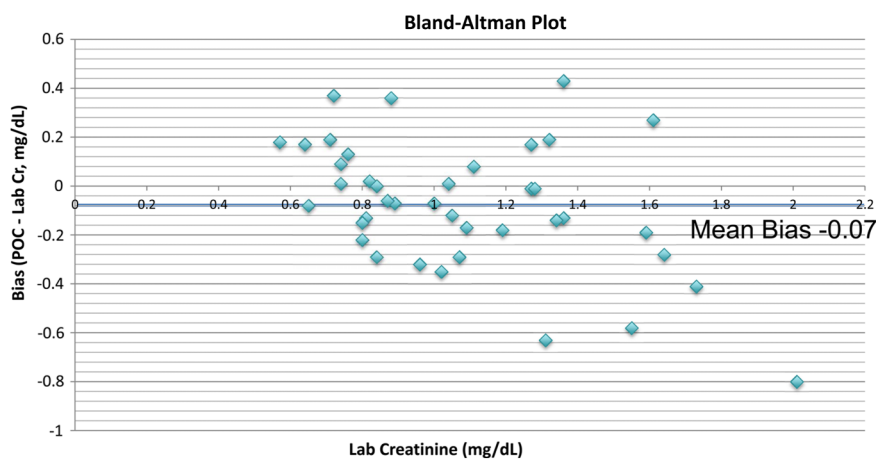
laboratory creatinine values available. Please see [table 2](#) for these results.

## DISCUSSION

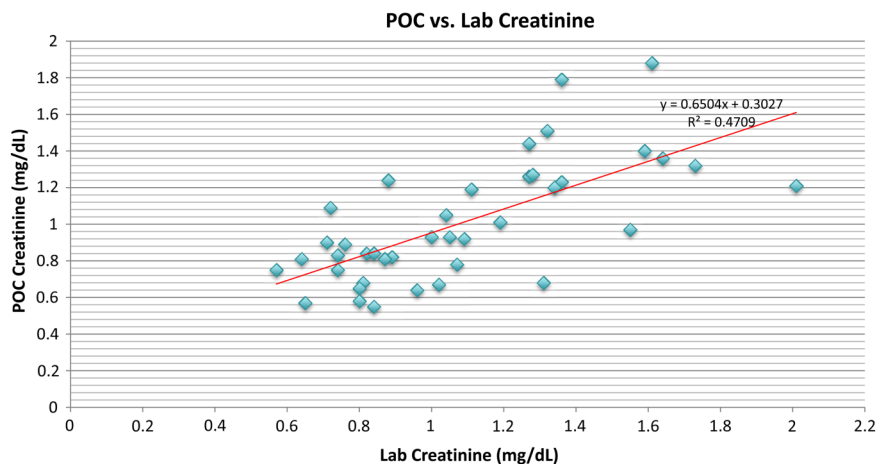
The purpose of this prospective observational study is to determine the potential clinical impact of this POC creatinine analyzer in the trauma setting. While its accuracy was known in other settings, it was important to know if the device could be used in a practical manner in the trauma setting. We had three key findings: the device provided accurate creatinine values, the information was available rapidly, typically before contrast was administered for imaging, and it was successfully implemented in our trauma workflow. The study supported the hypothesis that the POC creatinine device can be integrated into the existing trauma system and will result in creatinine values similar to the hospital laboratory, but significantly faster. The strength of this study is that it demonstrates prospectively that the device is functional in the trauma setting. The study design was chosen since the use of this device has not been established in trauma.

This study has several limitations. As a small, prospective observational study, it does not evaluate a specific intervention; neither does it influence the situations in which this device should be used. Further study is needed to determine if obtaining creatinine values truly impacts management in the practical setting, as well as to evaluate the short-term and long-term outcomes of using this information to tailor workup and management of individual patients.

**Figure 1** Bland-Altman plot. POC, point-of care.



**Figure 2** POC versus laboratory creatinine. POC, point-of care.



**Table 2** Creatinine data

	POC device	Laboratory	Difference	p Value
Mean creatinine value (mg/dL)	1.01±0.33	1.08±0.34	-0.07±0.27 (bias)	0.08
Mean time to availability (min)	11.6±10.0	78.1±27.9	66.4±27.4	<0.0001

POC, point-of-care.

On initial observation, the p value of 0.08 for the difference between POC and laboratory creatinine values is close to our predefined cutoff of 0.05, suggesting that there is a chance there would be a statistically significant difference if a larger sample was evaluated. Despite this, the absolute difference, or bias, of 0.07 is low and is the more critical value to evaluate in laboratory medicine. This tells us that even if there is a systematic difference between the values that is due to more than chance, it is small enough to not be clinically significant. This could be assessed further with a larger study. The difference in values may be explained by the difference in biochemical reactions as the POC device uses electrochemistry to test whole blood and the laboratory uses the kinetic Jaffe reaction on plasma.

The vast majority of patients in this study had normal creatinine values. Therefore, while the data support the accuracy of the creatinine values for patients with normal creatinine, the accuracy outside of the normal range was not demonstrated. A larger study or a different patient population would be necessary to look at the device in patients with renal failure.

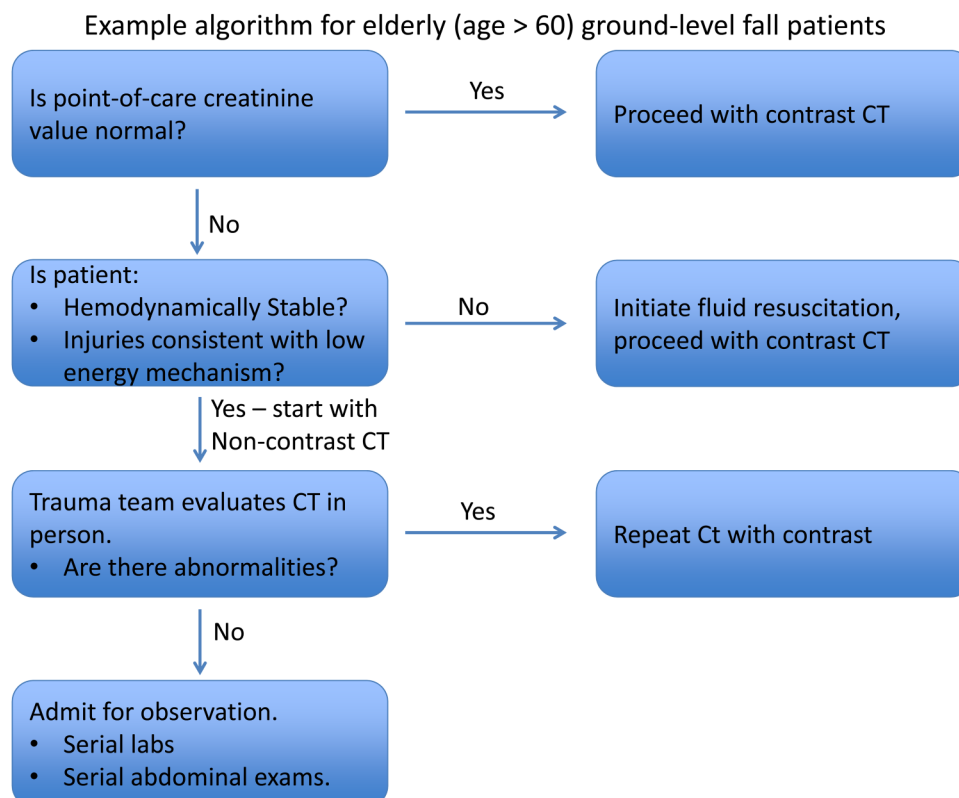
This device may affect practice in austere environments, where determination of creatinine values with a small,

inexpensive device could prove beneficial. There is a precedent for POC creatinine determination in an austere environment;<sup>7</sup> more research would be needed to determine its role in the care of trauma and surgical patients. Potential uses include resuscitation and management during prolonged transport and management of perioperative patients without access to a full laboratory. Forward surgical teams in role II settings may benefit by having an easily portable device that can be transported to each destination. Additionally, development is underway for similar devices that measure other important values, including hemoglobin.

This study also has the potential to affect a subset of trauma patients who have a low probability of critical findings on CT scanning, but have an increased likelihood of developing contrast-induced nephropathy. Examples of patients who may benefit are elderly patients who sustain a ground level fall requiring CT imaging and patients who are found down and at risk for rhabdomyolysis. The elderly portion of the trauma population is steadily growing, and even low energy mechanisms can cause significant injury in these patients. If found to have elevated creatinine, elderly patients could be resuscitated prior to a delayed CT scan with contrast, or an algorithm could be used to initially scan without contrast. Notably, the fact that creatinine values were available prior to contrast administration in this study means that this algorithm could potentially be implemented with minimal delay of care.

Determination of creatinine values with a POC device is feasible in a major trauma center. More research would be necessary to determine its feasibility in an austere environment. The device is quite portable; however, the test strips must be refrigerated in the long term.

Our outcome of obtaining similar creatinine results sooner than laboratory values is likely reproducible in further clinical

**Figure 3** Example algorithm for elderly (age>60) ground-level fall patients.

practice or research. It required no change to the structure of our trauma service. Further research will be necessary to determine if obtaining creatinine values faster leads to improvements in outcomes such as rate of contrast-induced nephropathy or time markers such as time to CT scanner, time to operating room, or time to admission.

A randomized controlled trial would be beneficial to determine if POC creatinine determination, coupled with a protocol for managing select patients with a low energy trauma mechanism, can achieve better outcomes. Please see [figure 3](#) for a sample algorithm for use in elderly ground level fall patients.

This device also has the potential to be used in austere environments due to its small size and inexpensive cost. Rapid determination of renal function can tailor resuscitation efforts during extended transport, or in the field. A rigorous study to establish feasibility can be followed by determination of the patient populations likely to benefit and the algorithms that can incorporate rapid creatinine values. Results of the POC testing also need to be tested in patients with profound shock and high ISS.

POC creatinine testing is a promising development for trauma practice in austere environments and workup of a subset of stable trauma patients with trauma. Further study is warranted to determine the clinical impact, both hospital-based trauma and austere environments.

**Acknowledgements** The study was supported in part by a National Heart Lung and Blood Institute (NHLBI) Emergency Medicine K12 award (Scholar: Nam Tran, Award number 5K12HL108964, PI: Nathan Kuppermann). Point-of-care creatinine testing devices and reagents were donated by Nova Biomedical (Waltham, MA, USA).

**Contributors** AJC contributed to study design, was the study coordinator, data analysis, primary role in manuscript writing and created figures. ESS and JMG contributed to study design, data evaluation and interpretation, critical review of manuscript. NKT was involved in study design, technical device expertise, data

evaluation and interpretation, critical review of manuscript. EG contributed to study design, resource coordination and critical review of manuscript. JM and JS were involved in data acquisition.

**Funding** Nova biomedical, National Heart, Lung and Blood Institute, 10.13039/1000000505K12HL108964.

**Competing interests** None declared.

**Ethics approval** UC Davis IRB.

**Provenance and peer review** Not commissioned; externally peer reviewed.

**Open Access** This is an Open Access article distributed in accordance with the Creative Commons Attribution Non Commercial (CC BY-NC 4.0) license, which permits others to distribute, remix, adapt, build upon this work non-commercially, and license their derivative works on different terms, provided the original work is properly cited and the use is non-commercial. See: <http://creativecommons.org/licenses/by-nc/4.0/>

## REFERENCES

- 1 Howell E, Sen S, Palmieri T, *et al.* Point-of-care B-type natriuretic peptide and neutrophil gelatinase-associated lipocalin measurements for acute resuscitation: a pilot study. *J Burn Care Res* 2015;36:e26–33.
- 2 Sen S, Godwin ZR, Palmieri T, *et al.* Whole blood neutrophil gelatinase-associated lipocalin predicts acute kidney injury in burn patients. *J Surg Res* 2015;196:382–7.
- 3 van Lint CL, van der Boog PJ, Romijn FP, *et al.* Application of a point of care creatinine device for trend monitoring in kidney transplant patients: fit for purpose? *Clin Chem Laboratory Med* 2015;53:1547–56.
- 4 Haneder S, Gutfleisch A, Meier C, *et al.* Evaluation of a handheld creatinine measurement device for real-time determination of serum creatinine in radiology departments. *World J Radiol* 2012;4:328–34.
- 5 Kosack CS, de Kieviet W, Bayrak K, *et al.* Evaluation of the Nova StatSensor(R) Xpress(TM) Creatinine point-of-care handheld analyzer. *PLoS ONE* 2015;10:e0122433.
- 6 Srihong C, Pangsapa K, Chuaboonmee K, *et al.* Evaluation of the analytical performance of the nova StatSensor creatinine meter for blood testing. *J Med Assoc Thai* 2012;95:1225–31.
- 7 Minnings K, Kerns E, Fiore M, *et al.* Chronic kidney disease prevalence in Rivas, Nicaragua: use of a field device for creatinine measurement. *Clin Biochem* 2015;48:456–8.